

Üstten taşıyıcılı ayarlı **sürme gardrop** sistemidir

Ahşap panel **sürgü** kapaklarda uygulanabilir

Taşıma Kapasitesi 1 kapak için 100 Kg 'dır.

18 - 50 mm panel kalınlıklarında kullanıma uygundur.

Ray içi **yavaşlatıcılı fren** sistemi ile açılış ve kapanış yönünde frenleme özelliğine sahiptir

Maksimum 2600 mm yükseklikte kullanılması önerilir

2 / 3 / 4 kapaklı uygulamalar yapılabilir

Kapaklar yükseklik ayarı  $\pm 4$  mm ayarlanabilir.

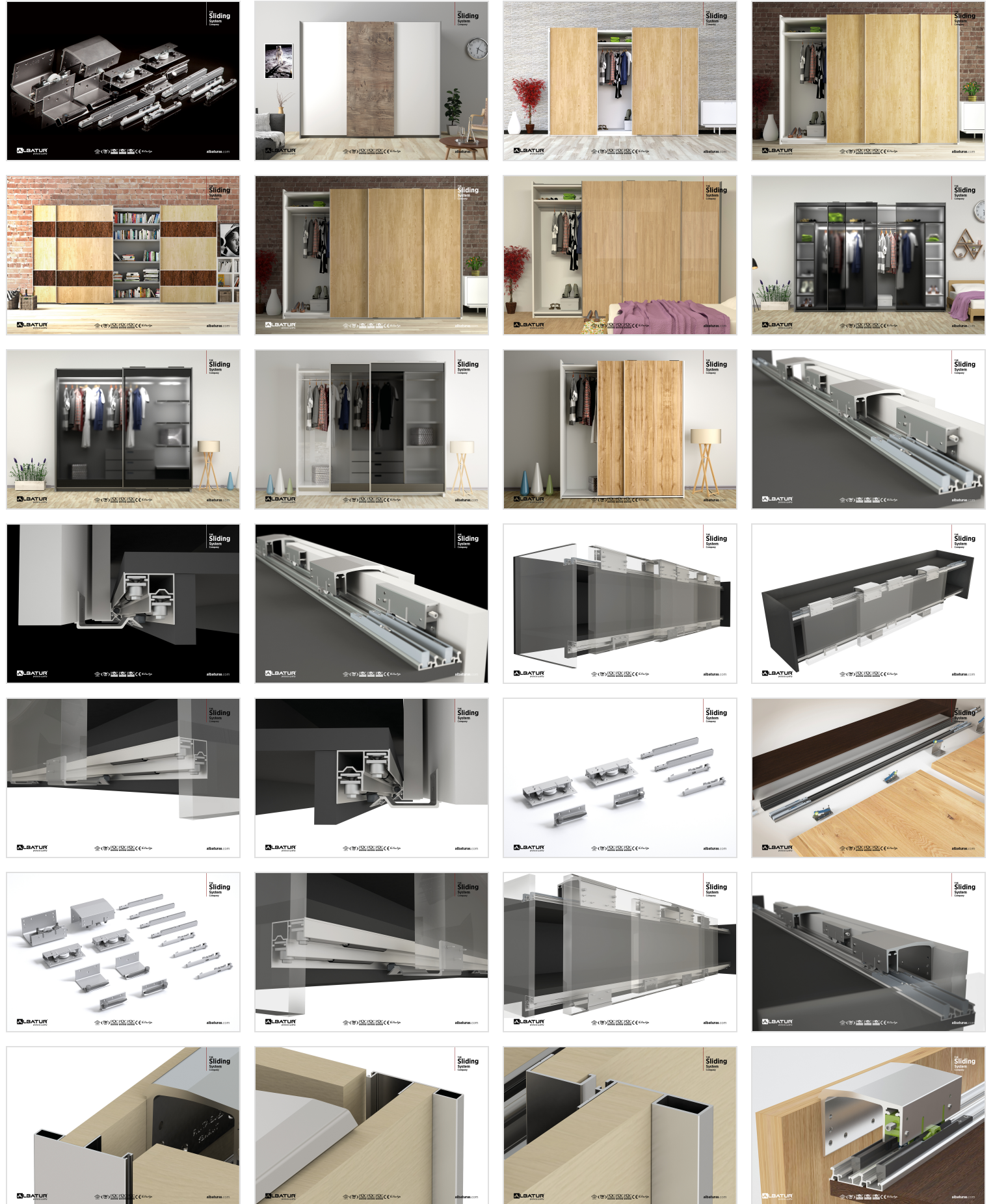
Ürünün 3D kurulum videosunu web sitemizden ulaşılabilir

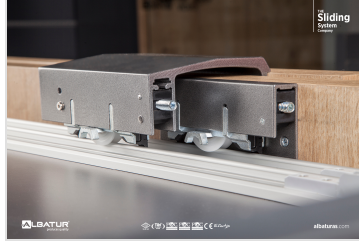
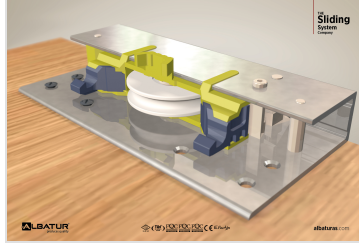
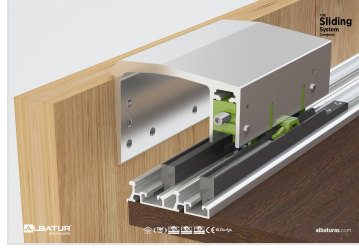
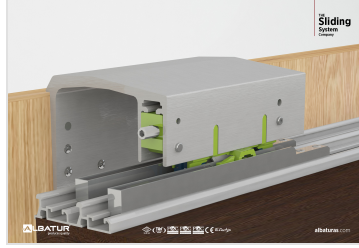
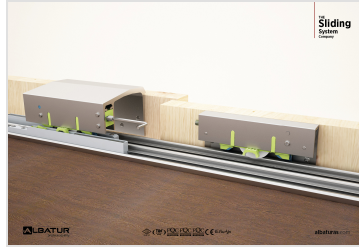
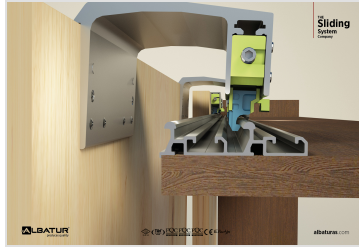
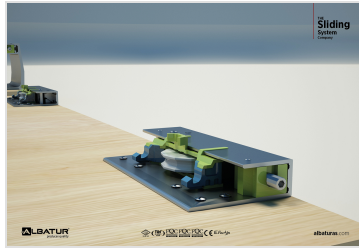
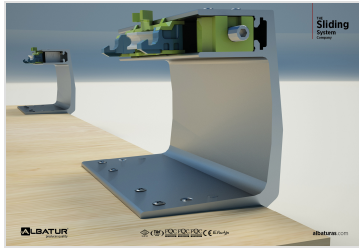
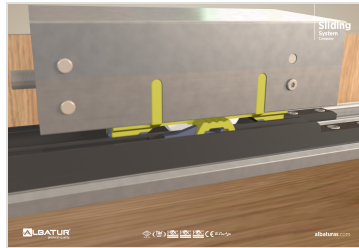
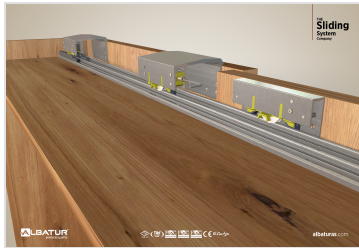
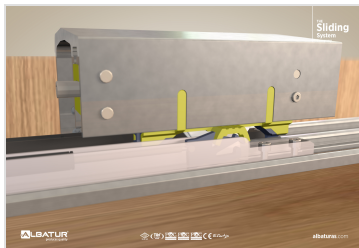
Yüksek kaliteli rulman sayesinde sessiz ve uzun ömürlü çalışma sağlar

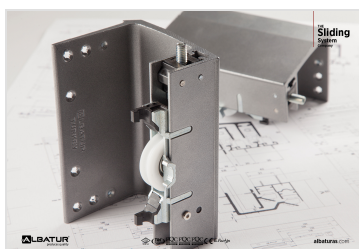
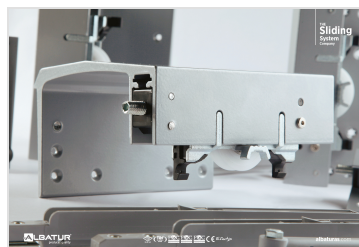
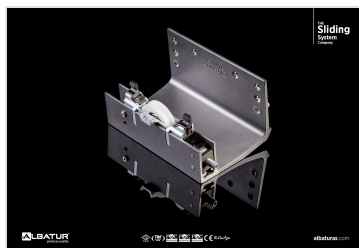
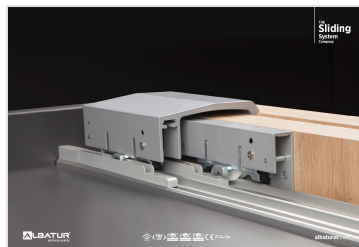
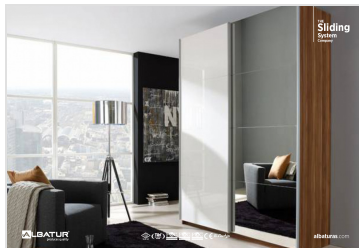
Kolay ve pratik montaj imkanı sunar.

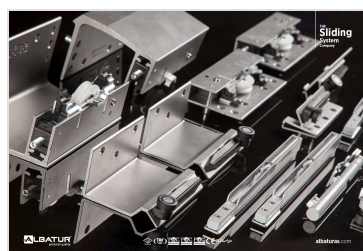
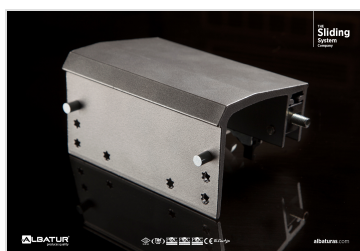
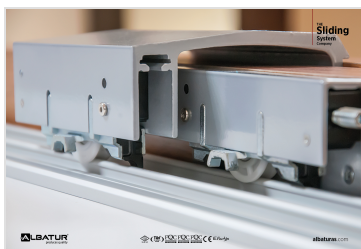
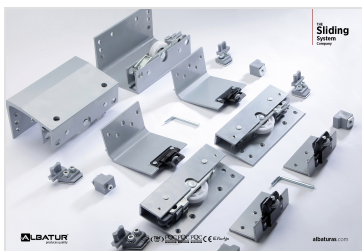
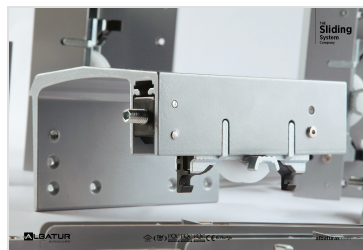
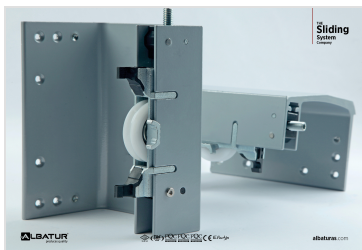
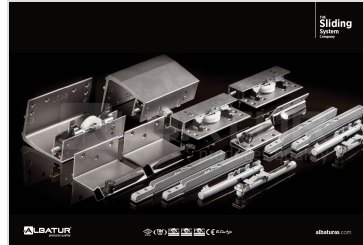
Farklı kalınlıklar için 5 ayrı model mevcuttur

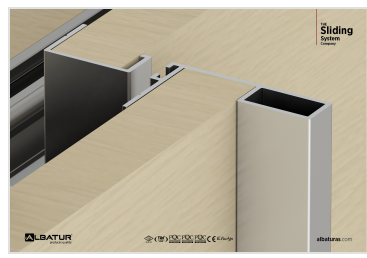
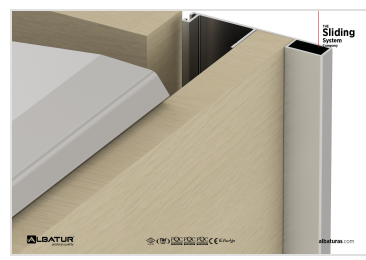
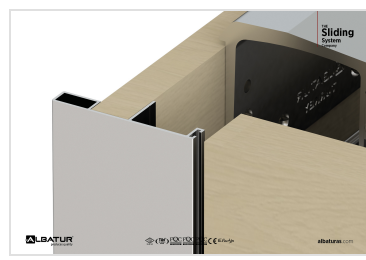
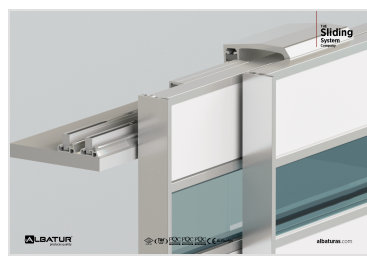
Alt ve üst ray içerisinde 8 kapak için 8 adet **yavařlatıcı** bulunur  
Kanadın ray profilinden çıkmasını önleyen kanca sistemine sahiptir  
3 kapaklı uygulamalarda opsiyonel olarak sađda , solda ve ortada frenleme yapılabilir.  
Alt İzleyici Klavuzlarda Poliüretan Kaplı Rulmanlı Makara Sistemi Mevcuttur.  
Dıştan çalışması sayesinde maksimum **dolap** kullanım derinliđi kazandırır













Sliding

ALBATOR

ALBATOR

albatour.com